

BOOK



COLLECTION 233

BOOK



233 COLLECTION INTRODUCTION

Enliven your closet with infinite possibilities. The 233 collection presents polished pieces that supply effortless chic and infinitely cool fashion. Introducing novelties such as energizing shades of Kelly Green, Violet, Tandoori, and Opulence; standout prints and textures as well as liquid and metallic finishes; the collection proposes a plethora of styles that show so you don't have to tell.

Once more, muted tones such as beloved Nutmeg, Mocha, and Avocado, and two new neutral shades, Latte, a creamy greige, and Toffee, a rich brown, garner much attention as they balance out high-energy hues and exciting patterns. Find styles for every mood and moment: tops and cover-ups ready to be loved and layered, stylish outerwear made to become city-sleek staples, crisply tailored pieces that make maximum impact, trendy jeans that fit like a glove, and dresses that sculpt and caress every curve. Furthermore, a vast new selection of cozy knitwear is ready to welcome you with fuzzy arms and pave the way for texture play.

The 233 Collection is everything you have hoped for. Its variety of curated styles and fits provide certified elegance and cover a wide-ranging spectrum going from mellow monochrome dressing to energizing power suits, color-me-cozy knits to statement puffer coats, or romantic and feminine satin dresses to edgy faux-leather moto jackets. There is no shortage of eye-catching numbers to choose from, no compromise on comfort or quality, and no hesitation you'll fall in love. Keep scrolling: a new wardrobe of possibilities awaits.



MODERN **04** GEOMETRY
CAFE **16** SOCIETY
SET **30** THE TONE
WILDLIFE **42**
URBAN **58** JUNGLE
COMFORT **68** ZONE
FREE **76** SPIRIT
NEW **88** DIMENSIONS
JET **100** SET



MODERN GEOMETRY



Feel seen in Kelly Green. Combine it with our newest shade of rich Toffee and you have Modern Geometry's contemporary color scheme. Modernity collides with '70s influences while geometric, abstract, and animal prints and head-to-toe color-dressing command attention. Ease, elegance, and functionality summarize this color story's assortment of leatherette separates, satin tops, and printed shirt dresses.



233973
233949
233089

233973 Embrace the sleek lines of this long-sleeved coat. Crafted from supple faux-leather fabric, this piece offers a put-together look on the cutting edge of style trends. Long straight sleeves and a notched collar accentuate the straight silhouette of this elegant animal print coat. **233949** Perfect for layering on chilly days or simply for an elevated everyday look, this sweater is sure to become your new go-to; it is made from a cozy sweater knit material and features a mock collar and long cuffed sleeves. The fitted silhouette provides a contoured look, while the ultra-comfy fabric keeps you comfortable all day long. **233089** Flattering and timeless, these Ponte de Roma slim-fit pants are a versatile essential for any wardrobe. The figure-hugging silhouette is crafted from a smooth Ponte de Roma fabric with hidden elastic and tummy control for a polished look. Front and back bag cuts create a modern shape, while the pants move with you for all-day comfort. Dress them up with a blouse and heels for an refined ensemble, or style them down with a tee and sneakers for a cool, casual look.

233115 This figure-hugging sheath dress is crafted from luxurious satin fabric and features an all-over animal print design. The cowl neckline and long sleeves add a touch of drama, while the below-the-knee length makes it perfect for any formal occasion. Add a pair of high heels and sparkling jewelry to complete the look.



233115



233048
233108
233109

233048 This sleeveless top offers exquisite simplicity. Made from soft and sleek satin fabric, this piece is perfect for layering but can also stand on its own when the weather gets hot. Its cowl neckline features gathered fabric for a contemporary and flattering look. Its straight silhouette is flattering on any body type. **233108** Turn heads with this classic, streamlined blazer. Made with understated features that let the piece's appearance do the talking, this is a wardrobe item you'll find yourself reaching for repeatedly. An elegant lapel collar and faux leather pockets complement this knit blazer. **233109** These culotte pants are the epitome of chic. The unique pleated leather-look fabric is luxurious and slimming, while the covered elastic waistband ensures a comfortable, flattering fit. These statement-making pants flow beautifully, making them perfect for a night out or a day at the office.



233949
233098
233272

233949 Perfect for layering on chilly days or simply for an elevated everyday look, this sweater is sure to become your new go-to. It is made from a cozy sweater knit material and features a mock collar and long cuffed sleeves. The fitted silhouette provides a polished look, while the ultra-comfy fabric keeps you comfortable all day long. **233098** These high-rise wide-leg pants are the perfect choice for a tailored yet relaxed look. The hidden elastic waistband provides a comfortable fit, while the fake welt pockets add a touch of refinement. Plus, the wide-leg silhouette creates a gorgeous silhouette. Whether you're dressing for work or play, these wide-leg pants will make you look and feel your best. **233272** This satin A-line dress is the perfect blend of style and comfort. The geometric print gives it a modern edge, while the satin fabric and puffy sleeves make it feel luxurious and feminine. Its lining ensures a smooth, comfortable fit, and its above-the-knee length makes it suitable for any occasion.



233127

233127 This stunning wrap dress is made from a silky knit fabric and features a beautiful abstract print. It has long sleeves, a wrap design with a twist-knot detail at the side waist, and falls below the knee. Perfect for any formal or special occasion, this dress will have you looking and feeling your best.



233272
DRESS



233092
BLAZER



233277
PANT



233292
TOP



233119
DRESS



233048
TOP



233048
TOP



233135
TOP



233011
PANT



233220
TOP



233204
TUNIC



233214
DRESS



233258
DRESS



231064TT
BLAZER



233047
PANT



233298
TOP



233973
COAT



233296
TOP



233197
PANT



233111
TOP





233108
BLAZER



233109
PANT



233227
TOP



233251
PANT



233949
TOP



233098
PANT



233127
DRESS



233094
DRESS



233178
TUNIC



233081
TOP



233044
DRESS



233200
TOP



233115
DRESS



233256
TOP



221210TT
DRESS



233303
JACKET






CAFE SOCIETY

Your one-way ticket to chic, Café Society is where the novelty shade of Violet comes to the fore. Mixed to neutrals, soft animal and geometric prints, are soft gold hardware accents, foiling details, and a new woven twill fabrication. Café Society is the promise you will move comfortably and gracefully in wide-leg pants, belted shirt dresses, and coordinating tailored sets.





233156
233179



233259
233924

233156 Add a little edge to your wardrobe with this animal print owl neck blouse. The shirt collar and three-quarter sleeves give it a refined look, while the milestone trim on the cuff and collar adds glamour. The shirttail hemline completes the look with a bit of attitude. Wear it with your favourite jeans, or dress it up with a skirt for a night out on the town. **233179** Rough around the edges but polished where it counts, these faux-leather pants are fit for a modern-day style maven. The flared silhouette and knee cut-outs lend a touch of attitude, while the covered elastic waistband ensures a comfortable fit all day long. Dress them up with a blouse and heels for an office-approved look with a bit of edge, or pair them with a rocker tee and sneakers for a casual weekend look. Either way, you'll be sure to turn heads. **233259** Add a touch of softness and femininity to your wardrobe with this unique shirt dress. Featuring a beautiful animal print design, it comes with a shirt collar and long puff sleeves. An A-line silhouette provides further definition. Made from a woven fabric, this dress is sure to keep you comfortable all day long. Dress it up with heels and statement earrings for a night out, or keep it casual with sneakers and a denim jacket. **233924** It can be challenging to dress for the colder weather—unless you find the perfect everyday piece. This vest offers warmth without compromising on elegance. It's made from a blend of faux fur and satin fabrics and comes with many contemporary touches. Use a crew neckline and a straight silhouette. In true vest fashion, it's sleeveless.

233966 Featuring a unique asymmetrical neckline, this is a functional yet stylish sweater you'll reach for time and time again. This cozy top is made from a soft sweater knit material, with three-quarter dolman sleeves and a cozy silhouette. **233263** These sleek and chic faux-leather pants will save your style up a notch. They have a straight-leg silhouette that flatters your figure and are unlined for ease of wear. They're made with faux leather, which is all the rage this season. So whether you're dressing up for a night out or just wanting to elevate your everyday look, these pants are a great choice. Trust us, you'll feel confident and fabulous in them.

233955
233263



233039
233230
233277

233039 Wow your colleagues when you show up to the office wearing our notched collar blazer. This chic blazer is perfect for those days when you need to look polished and put together. The notched collar and fake buttons at the hem of the long straight sleeves give this blazer a touch of refinement, while the bonded silky knit and Mimoso fabric keep you feeling comfortable all day long. **233230** Understated sophistication and confident style come together in this mock collar tank. This classic and versatile piece is crafted from a luxurious jersey knit fabric and features a sleek, fitted silhouette with a mock collar. It's the perfect top to take you from the office to after-hours drinks easily. Whether you wear it on its own or under a blazer, it's sure to turn heads. **233277** Made from a highly sought-after bonded silky knit material, these pants are perfect for mixing and matching. The wide-leg silhouette is flattering on any body type, and the comfortable, structured contour waistband ensures a perfect fit. Whether you're dressing up for a special occasion or just looking for go-to pants for everyday wear, our wide-leg pull-on pants are sure to become a staple in your wardrobe.



233253
233140

233253 Dress it up or down, this easy-fitting tunic is sure to become one of your favourites. Its minimalist design is perfect for versatile styling, while the keyhole neckline with ring detail gives it just enough personality. The three-quarter sleeve provides coverage, and the trapeze silhouette flatters your waistline. **233140** Looking for something a little different in your workwear repertoire? These woven wide-leg pants are a great alternative to the usual suit trousers. Cut with a roomy fit and wide legs, they'll make you stand out from the pack while still looking refined and confident. Made from a solid woven fabric, they're also super comfortable and will keep you feeling cool and collected all day long.

233038
233230
233043

233038 This chilo blazer is a timeless piece that will instantly elevate your look. It is made from a lightweight woven fabric and features a notch collar, three-quarter sleeves with wrist tabs, and five flap pockets at the hips. This blazer is unlined for a relaxed fit. Pair it with tailored pants and heels for a chic office-approved outfit, or wear it with jeans and sneakers for a more casual look. **233230** Understated sophistication and confident style come together in this mock collar tank. This classic and versatile piece is crafted from a luxurious jersey knit fabric and features a sleek, fitted silhouette with a mock collar. It's the perfect top to take you from the office to after-hour drinks easily. Whether you wear it on its own or under a blazer, it's sure to turn heads. **233043** Step out in style with these stunning woven wide-leg pants. Crafted from high-quality fabric, they will flatter your figure and keep you comfortable all day long. They feature belt loops, pockets and a wide leg, making them the perfect choice for various occasions. Dress them up with heels and a blouse for a chic look, or keep it casual by pairing them with a tee and sneakers.



233038
BLAZER



233043
PANT



233038
BLAZER



233043
PANT



233259
DRESS



233924
VEST



233161
PANT



233969
JACKET





233253
TUNIC



233253
TUNIC



233140
PANT



233156
BLOUSE



233179
PANT



233184
TOP



233287
SKIRT



233271
DRESS



233283
PANT



233010
DRESS



233063
JACKET



233196
PANT



233955
TOP



233263
PANT



233203
TUNIC



223196TT
PANT



233104
DRESS



233033
TUNIC



233034
PANT



201547TT
COVER UP



233039
BLAZER



233277
PANT



233124
TOP



233124
TOP



233175
DRESS



233922
COAT





- 233054
- 233054
- 233054
- 233054
- 233054
- 233054
- 233054
- 233054
- 233054
- 233054
- 233054
- 233054
- 233054
- 233054
- 233054

233054
TOP



233916
PANT



233128
BLOUSE



233278
PANT



233013
BLAZER



233153
TUNIC



233052
TOP



- 233260
- 233260
- 233260
- 233260
- 233260
- 233260
- 233260
- 233260
- 233260
- 233260
- 233260

233260
TOP



201483TT
PANT



233134
TOP



233134
TOP



233232
JACKET



233276
PANT



143148TT
COVER UP



233123
JACKET



143132TT
CAMISOLE



SET THE TONE



The feeling is mutual, and it's neutral. Latte's milky greige is the impactful neutral that sets the tone for cozy knits, leatherette blazers, sweater coats and vests, and check-patterned knitwear in this assortment of desaturated, but no less impactful, styles. Discover all the layering opportunities this story has to show and watch as powerful checks and houndstooth prints pack a punch.





233091

233091 This evening occasion dress is made from a mix of luxurious faux-leather fabric with silky knit, making it both stylish and comfortable. Its fitted bodice, empire waist and flared skirt will flatter your figure, while the front pockets are perfect for carrying your essentials. Whether you're looking for a sophisticated daytime look or a chic evening outfit, this dress is sure to turn heads.

233941 With a serene yet refined houndstooth pattern, this distinctive coat allows you to feel warm and comfortable while remaining iconic. Highlights include a notched collar and long cuffed sleeves. A long straight silhouette ensures this piece to offer optimal protection when worn with a skirt or pants outfit. **233944** Casual simplicity meets high-end style in our gorgeous jersey knit turtleneck top. The luxurious fabric is soft to the touch and drapes beautifully, while the long sleeves and cozy turtleneck create a flattering silhouette. **143105TT** If you're a woman-on-the-go searching for the perfect everyday pants, then look no further. This straight-fit pull-on pant is ideal for the woman who prioritizes comfort and versatility. The flattering silky knit material paired with a covered elastic waistband creates an effortless style, while the slit on the back bottom legs give a classy detail.



233941
233184
143105TT



233045
233011

233045 Whether you're looking to add a touch of refinement to your office attire or seeking a stylish piece to complete your weekend ensemble, this printed houndstooth blazer is a perfect choice. The classic houndstooth pattern and notched collar give it a timeless feel, while the boxy silhouette and long straight sleeves lend it a modern sensibility. Dress it up with tailored trousers and a crisp white shirt for the office, or wear it with jeans and a tee for a more casual look. **233011** The season's must-have fashion item is here - and it's vegan! These gorgeous faux-leather wide-leg pants are sure to turn heads, with their high-waisted, knee-cut silhouette and figure-flattering shape. The hidden elastic waistband ensures a comfortable and custom fit, while the fake fly and back darts add a touch of tailored style. Whether you dress them up for a night out or down for a day at the office, these pants are sure to make a statement.



233177
233180
233957

233177 This luxurious sweater is crafted from the finest jersey fabric and is designed to flatter your figure. The long sleeves and mock neck give it a chic Parisian look that is perfect for any occasion. Whether you're dressing up for a special event or just enjoying a night in, this sweater will keep you feeling warm and looking fabulous. **233180** Made for the modern woman on the move, our bonded silk straight-leg pants are constructed from a luxurious, smooth fabric for a refined look and feel. They're cut to sit straight through the leg for a slimming effect and are designed with an elastic waistband for all-day comfort. Finished with decorative gold buckles and J.R. ornament, these pants can be dressed up or down depending on your mood and the occasion. **233957** This elegant vest features a timeless houndstooth pattern and a sleeveless design. Its straight silhouette gives it a formal touch, while the super-soft knit fabric and classic jacquard finishes make it a luxurious choice for layering.



233963
233249
233965
233089

233963 This oversized blazer is the perfect piece to elevate your workwear wardrobe. Its sleek, luxe leather finish and oversized silhouette make it ideal for both work and play. Whether you're wearing it to the office or out on the town, you'll always look your best in this sophisticated blazer. **233249** These retro, quiche pants are printed with a beautiful, houndstooth design and have pintucks at the front and back of the legs for a touch of refinement. The hidden elastic waistband ensures a comfortable and flattering fit, while the quiche silhouette gives them a fun and playful vibe. **233965** Whether you wear it over a turtleneck or a dress, this plaid poncho will become your new go-to for chilly days. The cool neck and poncho silhouettes are both ultra-flattering, while the long sleeves provide coverage when you need it most. Plus, the lined design makes this poncho an effortless layering piece. **233089** Flattering and timeless, these Ponte de Roma slim-fit pants are a versatile essential for any wardrobe. The figure-hugging silhouette is crafted from a smooth Ponte de Roma fabric with hidden elastic and bummy control for a polished look. Front and back leg cuts create a modern shape, while the pants move with you for all-day comfort. Dress them up with a blouse and heels for an refined ensemble, or style them down with a tee and sneakers for a cool, casual look.



233045
BLAZER



233230
TOP



233174
DRESS



233963
BLAZER



233249
PANT



233957
VEST



233180
PANT



233180
PANT



233053
BLOUSE



233091
DRESS



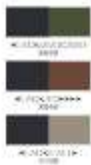
233965
COAT



233089
PANT



233964
COVER UP



233144
TOP



233078
TUNIC



233941
COAT



143105TT
PANT



233300
VEST



233193
PANT



233289
DRESS





233266
TOP



233264
TOP



233046
JACKET



233937
COVER UP



233240
JACKET



233142
BLAZER



233138
PANT



233281
TOP





233252
TOP



233076
JACKET



233903
TOP



233904
PANT



233040
DRESS



233239
JACKET



233154
PANT



233978
BLAZER





WILDLIFE

For the trailblazers: wherever you wander, do it with assurance and style. Wildlife presents the lineup to do just that. Mixed textures, neutral tones of Avocado, Nutmeg and Black, sweater knit coats, reversible faux-fur vests, over pieces in nylon quilting, and blazers decorated by leatherette trims and military details make up the perfect wardrobe for the women pushing boundaries and ready to take on the world.





233290
233297

233290 Take your style up a notch with this chic and stylish animal print top. Crafted from a jersey fabric, it features long sleeves, a fitted silhouette, and a mock neck. Dress it up with black trousers and heels for a night out, or keep it casual with jeans and sneakers. **233297** Sitting below the knee, this skirt is made from solid leatherette, giving it a contemporary look. It has a straight silhouette that moves, it fits at home at a party or even a formal event. Its beauty lies in its simplicity, it is outlined.

233223 This feminine wrap dress is the perfect combination of style and comfort. The printed abstract silky knit fabric is trimmed with faux leather for a chic look, while the shirt collar and cuffs add a touch of elegance. The gold buckle at the sash completes the look. This wrap dress is perfect for any occasion, from a night out on the town to a day at the office.



233223



233921 This sleeveless puffer vest is perfect for adding a touch of classic, vintage charm to any outfit. It's lined for added warmth, making it ideal for chilly days or cool evenings. The hood provides additional protection from the elements. Whether you're running errands or hiking, this puffer vest will keep you comfortable and elegant all day long. **233273** Made from a soft sweater knit, this chic dress comes with a scooped neckline and long straight sleeves. Its sheath silhouette makes it a contender for the most flattering piece in your wardrobe. The focal point of this piece is the wide black belt at its centre which also comes with gold trim.

233921 This sleeveless puffer vest is perfect for adding a touch of class, vintage charm to any outfit, its lined for added warmth, making it ideal for chilly days or cool evenings. The hood provides additional protection from the elements. Whether you're running errands or hiking, this puffer vest will keep you comfortable and elegant all day long. **233273** Made from a soft sweater knit, this chic dress comes with a scooped neckline and long straight sleeves, its sleek silhouette makes it a contender for the most flattering pieces in your wardrobe. The focal point of this piece is the wide black belt at its centre which also comes with gold trim.



233921
233273



233224 Flaunt a chic and confident look with this belted tunic dress. Made from woven fabric, this piece comes with an eye-catching abstract print and delicate gold ornamentation on its chest pockets. There is a button front closure and a leatherette belt around the waist of the piece, which cinches your waist for a flattering silhouette. This tunic dress also has a slit for improved moveability. Additionally, it features a notched collar, long straight sleeves, and a shift silhouette that sits above the knee.



233948
233970

233948 This boxy top is made of jacquard sweater fabric with faux-leather accents, giving it a luxurious look and feel. The three-quarter dolman sleeves and funnel collar are both stylish and comfortable. And the best part? The animal print gives this top a one-of-a-kind look that is sure to turn heads. **233970** With a wide-legged silhouette that's more than a little vintage-inspired, these jeans feature a flattering contemporary high-rise fit. Made from premium denim fabric, these pants are comfortable enough to wear at home and stylish enough to wear for a night out on the town.



233944
233915

233944 This luxurious jacket is made from high-end solid suede and features a lapel collar with ornate rhinestone detailing. The long straight sleeves make this jacket perfect for protecting you from the elements, while the fitted silhouette is designed to accentuate your best assets. The rhinestones add an edgy touch that will make you stand out. **233915** These slim-fit jeans are the perfect way to add a touch of fun and personality to your look. The lively animal print is sure to turn heads, while the slim fit flatters your figure. Dress them up with a blouse and heels for a night out, or keep it casual with a tee and sneakers. Either way, you'll love how you look in these sly/ian jeans.



233224
DRESS



233921
VEST



233273
DRESS



233116
TOP



233246
COVER UP



233159
TOP



233041
TOP



233058
COVER UP



233966
VEST



233093
TOP



233944
JACKET



233915
PANTS



233186
TOP



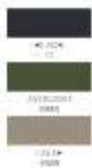
233948
TOP



233970
PANT



233262
DRESS



233963
BLAZER



233205
TUNIC



233067
PANT



233241
COAT



233146
TOP



233229
TOP



233960
COAT



233234
BLOUSE



233110 DRESS



233065 COAT



233129 TOP



233125 JACKET



233219 PANT



233267 TOP



173444TT DRESS



233187 TUNIC



144092TT
PANT



233118
TOP



233926
JACKET



233290
TOP



233297
SKIRT



233073
DRESS



233101
TOP



233102
PANT



233085
TUNIC



233035
DRESS



233953
JACKET



233057
TUNIC



233221
DRESS



233254
TOP



233122
PANT



233247
VEST



233150
TOP



233270
JACKET



233269
PANT



233255
TOP



233304
BLAZER



233163
PANT



233223
DRESS



233943
BLAZER





233282
PANT



233147
TOP





URBAN JUNGLE

Urban Jungle delivers big city energy translated through hero styles leveled up by animal prints and splashes of Tandoori. Turtleneck tops, tailored separates, silky knit wrap dresses, sumptuous coats, as well as leatherette and belted pants all make a case for the strong and unapologetic women ready to make a power move.





233201
233162
233265
233166

233201 Made from printed Georgette, this charming top features a boxy silhouette, long cuffed sleeves, and a easy V-neckline. The beauty is in its detailing, with multi-row swatching at the bottom of each sleeve. This graceful piece is also adorned with a beautiful animal print. **233162** Made from a heavy knit material, these pants will keep you warm and look incredibly well-appointed. Enjoy a slim-fit silhouette that accents and complements your body's every curve. There's also a luxe leatherette belt closure at the front of the pants for a touch of refinement. Plus, they come with a comfortable hidden elastic waistband for the perfect fit. **233265** This versatile top is constructed from luxurious knit fabric and features a solid collar, not to mention a variety of outfits. Feminine details like a scoop neckline, three-quarter sleeves, and a ponoro silhouette give this top an elevated look, while the relaxed fit ensures all-day comfort. **233166** These ready-to-wear pants feature a universally-flattering wide-leg silhouette and a 'lowy unlined construction. They are made from solid knit fabric, which makes them easy to pair with your favourite blazer, top, or sweater. A wardrobe staple that you'll keep and wear for many seasons to come.

233942 This statement-making coat is crafted from high-quality faux fur, making it an ethical and sustainable choice. The collar is notched for a touch of sophistication, and the long straight sleeves provide a polished look. The A-line silhouette is flattering on all body types. 233164 Elegant and feminine, this beautiful dress leaves an instant impression. Its made from ultra-soft knit fabric and features a solid pattern. It also comes with a wrapped neckline and long straight sleeves. A 51-and-flare silhouette puts the look together.



233942
233164





233136 This satin blouse is perfect for creating a chic, pulled-together ensemble. The straight silhouette and long sleeves are flattering and easy to wear, while the drape neckline adds just the right amount of drama. Pair this blouse with slim-fit pants and heels for a polished look that's perfect for work or evening occasions. **233011** The season's must-have fashion item is here - and it's vegan! These gorgeous faux-leather wide-leg pants are sure to turn heads, with their high-waisted, knee-cut silhouette and figure-flattering shape. The hidden elastic waistband ensures a comfortable and custom fit, while the fake fly and back darts add a touch of tailored style. Whether you dress them up for a night out or down for a day at the office, these pants are sure to make a statement.

233176 This luxurious silky knit wrap dress is covered in wild spots, giving you an empowering feeling as you wear it. The long sleeves and below the knee-length keep it elegant and refined, while the side buckle with saash detail adds just a hint of fun and frivolity.





233927
233181

233927 This luxurious and stylish coat is made from sleek leatherette and features stunning faux fur accents on its trim. This gives it an old Hollywood charm that is sure to impress. It's the perfect choice for anyone looking to dress warm and chic this winter. The timeless coat has a shawl collar and a V-shaped neckline and comes in a fit-and-flare silhouette. **233181** You rarely find pants that are as comfortable as they are stylish, but these wide-leg pants fit the bill. Made from a soft and lightweight scuba crepe fabric, they're perfect for everyday wear but can also be dressed up for a more formal occasion. They feature a fake belt with a functional buckle at the waist and darts at the back for a better fit.



233176
DRESS



233136
TOP



233162
PANT



233201
TOP



233164
DRESS



233942
COAT



233008
TOP



233265
TOP





233166
PANT



233177
TOP



233177
TOP



233181
PANT



233927
COAT



233075
DRESS



233185
TOP



233291
JACKET





233061
JACKET



233099
BLOUSE



233096
DRESS



233051
TOP



233003
TOP



233293
JACKET



233032
PANT



233025
TOP



233064
COAT





COMFORT ZONE

Crisp air and cool outerwear: meet the fresher seasons' starring cast and crew in hues of spicy Tandoori. The hottest cold climate essentials can be found here: faux-suede moto jackets, turtleneck tops, bouclé blazers, knitwear, and casual cover-ups. Built to layer and to love, the styling possibilities are infinite and the compliments you can receive are too.



233926
233929

233926 Understated with just the right amount of detailing, this knit jacket is the perfect choice for those who prefer their fashion refined. Complete with a notched collar and fitted silhouette, this long-sleeved piece is ready-to-wear and perfect for the shoulder season. 233929 Throw on this understated pair of denim pants and enjoy a well-dressed night with little effort. Made from our high-end blend of classic well-sourced denim material, these pants come with a classic and flattering slim fit that never goes out of style.

233971 Add variety to your ready-to-wear blazer collection with this piece. Crafted from bouclé fabric, a high-end material crafted from luxuriously textured yarn, this blazer feels and looks great. Other highlights include a notched collar, long straight sleeves and statement buttons at its front. 233974 These slim-fit crop jeans are made from high-end woven denim that feels as good as it looks. The cropped silhouette and vintage-inspired houndstooth pattern work together to elongate your legs. With their slim fit and versatile style, these jeans can be dressed up or down to suit any occasion.



233971
233974



233059 This beautiful trapeze jacket is expertly crafted from jacquard knit and faux leather for a luxurious look and feel. The shirred collar and three-quarter length sleeves with cuffs add a touch of refinement, while the square buttons and faux-leather patch add a bit of fun and whimsy.
233929 Throw on this understated pair of denim pants and enjoy a well-dressed night with little effort. Made from our high-end blend of classic wool-sourced denim material, these pants come with a classic and flattering slim fit that never goes out of style.



233100 Make a statement in this iconic and bold piece. Crafted from a sweater knit fabric, it features a tiger print, an overlap collar, and three-quarter dolman sleeves. The boxy silhouette is both flattering and comfortable. Whether you're dressing up for a special occasion or running errands, this top is perfect for any and every occasion. **233970** With a wide-legged silhouette that's more than a little vintage-inspired, these jeans feature a flattering contemporary high-rise fit. Made from premium denim fabric, these pants are comfortable enough to wear at home and stylish enough to wear for a night out on the town. **233173** You can rarely pull an outfit together with only one garment. However, that's the case with this beautiful printed dress. With a retro-inspired geometric print, this dress is made from a supple, silky knit material. It also comes with a boat neckline and three-quarter straight sleeves. Its sheath silhouette adorns your body and sits right at the knee.



233950

233950 This plaid coat is carefully constructed from soft yet durable jacquard fabric, and features deep front pockets with a single ornate button closure on each pocket's front. A hooded collar provides increased functionality. The coat has a straight silhouette and falls just below the hips, making it the perfect piece of outerwear for everyday wear.



233971
BLAZER



233929
PANT



233173
DRESS



233055
TOP



233928
JACKET



233080
TOP



233926
JACKET



233974
PANT



233059
JACKET



233126
TOP



233950
COVER UP



233012
PANT



233198
JACKET



233206
TOP



233206
TOP

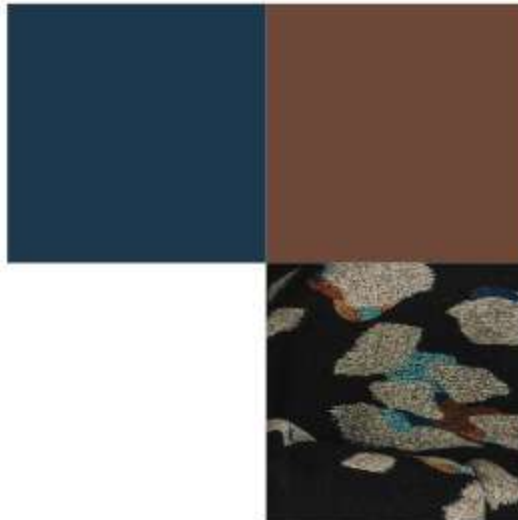


233100
TOP



FREE SPIRIT

A vision of feminine seventies-inspired boho-chic and sophisticated ease in shades of Nightfall and Toffee, Free Spirit is home to the beloved indigo bootcut and flared denim; faux-suede jackets; timeless ponchos and sumptuous velvet blazers. Leatherette trim detailing is weaved into an array of effortlessly stylish pieces, adding a subtle edge and striking a perfect balance between sharp and relaxed dressing.





233105

233105 Flaunt your wild side with our animal print sheath dress. This figure-flattering dress is made from a silky knit fabric adorned with a modern animal print. It falls just above the knee and features airy, Georgia three-quarter-length bell sleeves. Extra details include a faux wrap and metal ornament at the waist.

233112 Extend your pattern repertoire with this chic animal print top. With a boxy silhouette and mock neckline, this piece has enough contemporary touches to keep it current and enough classic touches to make it timeless. Its three-quarter length sleeves are finished with faux-leather accents. 233932 Cut in a classic slim silhouette, these jeans are crafted from a deluxe woven composition that's soft without losing its shape. They're finished with an embossed design of alligator in rhinestones on the left leg for an elevated touch.



233112
233932



233940 Made from a luxurious blend of jacquard and faux fur, this poncho will keep you warm and stylish all season long. The hooded collar and kimono-inspired sleeves are trimmed with lovely faux fur, adding a touch of elegance to this already refined piece. The poncho silhouette is incredibly flattering and drapes beautifully on the body. **233911** The search for the perfect pair of casual denim ends here. With a universally flattering and beloved boyfriend fit, these jeans are made from well-constructed high-end denim. Intentional rips in the front of these pants give them a touch of edginess. **233299** Cozy yet highly-refined, this jacket comes with a modern boxy silhouette and a timeless plaid pattern. It's made from a careful blend of suede, scuba, and leatherette fabrics. Other highlights include a stand collar and a zipped neckline. This jacket has short sleeves. **233930** These '70s-inspired jeans are made from supple denim fabric and boast a trendy flare out. They can be worn with practically anything, making them a versatile and essential piece in any woman's wardrobe.



233103
233930

233103 Adorn yourself with the soft feel of this blazer. Carefully made from well-curated bonded velvet fabric, this work-ready garment comes with a fitted silhouette, a notched collar, and a lapel. Other focal points include functional pockets, a one-button closure and long straight sleeves. Shoulder pads add further definition to this luxurious blazer. **233930** These '70s-inspired jeans are made from supple denim fabric and boast a trendy flare cut. They can be worn with practically anything, making them a versatile and essential piece in any woman's wardrobe.



233183
233934
233931

233183 This gorgeous piece is crafted from premium suede, and features a flattering fit and flare silhouette with long straight sleeves. The wrap collar and front zippers add a touch of edgy sophistication, while the jacket is lined for a light and airy feel. Perfect for transitioning from day to night, this jacket is a must-have in your wardrobe. **233934** Made from a soft knit material, this top features strong angles and a boxy silhouette that is both flattering and empowering. The three-quarter bell sleeves give the top a fovy look that's perfect for a night out or a day at the office. **233931** For a modern, relaxed pair of jeans, try a pair of bootcut pants on for size. Made from high-and woven denim material, these pants deliver a casual yet polished look. Bootcut style pants fit just above the ankle and feature a relaxed fit that allows optimal movement throughout your daily life.



233183
COAT



233930
PANT



233934
TOP



233934
TOP



233103
BLAZER



233931
PANT



193198TT
JACKET



201546TT
CAMISOLE



233074
DRESS



233105
DRESS



233186
TOP



211361TT
BLAZER



233112
TOP



233932
PANT



233149
TOP



233920
DRESS



233299
JACKET



233244
TOP



233244
TOP



233000
PANT



233940
COVER UP



233911
PANT



233049
TOP



233049
TOP



233168
TOP



233959
COVER UP



233107
TUNIC



233151
TUNIC



233279
PANT



233145
TOP



233202
TOP



233171
TUNIC



233286
PANT



233152
DRESS



233121
BLAZER



144092TT
PANT



161066TT
TUNIC



233014
TOP



153088TT
PANT



233042
JACKET





233918
PANT



233288
TOP



163083TT
SKIRT



233131
DRESS



223121TT
DRESS





NEW DIMENSIONS

A bright idea? Embracing Opulence's electric magenta shade. New Dimensions does just that by combining bold color, crisp tailoring, and dramatic black accents. Color blocking, houndstooth details, abstract prints, and graphic checks join the party as they dress up embellished blazers, faux fur and puffer coats, satin blouses, and tweed knits.



233951
233024

233951 Made from a sumptuous knit material, this coat comes with a notched collar and long straight sleeves, giving you a chic and sophisticated look. The unlined design makes it perfect for layering over your favourite outfits, while the side pockets are ideal for keeping your essentials close at hand. 233024 Who says comfort can't be chic? These slim-fit pants prove that you can have the best of both worlds. Made from a lightweight and breathable twill, they are perfect for warmer days. They have a fly and button closure at the front and a hidden elastic waistband for a comfortable and custom fit. Plus, the sleek, slim-fit silhouette looks great on everyone. Whether you're dressing them up for work or keeping it casual for the weekend, these pants will become your new go-to's.

233097 This Luxurious wrap jumpsuit is the perfect piece to elevate your look. The ornate buckle and long sleeves add a touch of glamour, while the culotte pants and wrap neckline provide a chic and flattering silhouette. And the best part? The zipper back makes it easy to get in and out of. Whether you're attending a wedding, gala, or cocktail party, this one-of-a-kind jumpsuit is sure to turn heads.



233097



233192
223196TT



233130

233192 Featuring a bold abstract print, this jacket is one to remember. It's made from sumptuous jacquard fabric in a lovely trapeze silhouette. Other highlights include three-quarter cuffed sleeves and a contemporary crew neckline. Statement buttons give this jacket a high-end look. **223196TT** Pants that feel as good as they look. That's what you can expect with our microtwill straight-leg pants. The twill fabric is not only comfortable, but also has a subtle texture that will keep your look from getting stale. And the classic straight-leg silhouette is updated with a modern elastic waistband. Other details include side pockets, belt loops, a faux fly and back darts. So go ahead and put your best foot forward in these pants. You'll look and feel amazing. **233130** A charming houndstooth pattern adds character to this well-crafted dress shirt dress. The luxurious silky knit material and houndstooth jacquard insert at the bottom of the dress ooze elegance, while the faux-leather accents add a touch of refinement. With long sleeves, a cowl collar and an above-the-knee length, this dress is a timeless classic that will have you looking and feeling your best.



233900
233143

233900 This puffer coat is the perfect blend of luxury and comfort, with a mix of faux fur and novelty fabrics that are soft inside and out. It features long straight puff sleeves and a hooded collar, giving it a vintage charm. Plus, it's lightweight and warm, making it perfect for those cold winter days. **233143** Our plaid slim-fit pants are the epitome of elegance and versatility. Made from a luxurious jacquard sweater fabric, they offer a slim fit with a covered elastic waistband for ultimate comfort. Whether you're dressing them up for a special occasion or pairing them with your favourite tee for a casual look, these timeless and effortlessly stylish plaid pants are sure to become a staple in your wardrobe.



233026
233180

233026 Add a touch of shine to your wardrobe with this beautiful satin top. This unique fabric offers a comfortable feel and a unique appearance. This piece also features a V-shaped neckline and short statement sleeves. Its sleek silhouette adds a well-measured ease of femininity. **233180** Made for the modern woman on the move, our bonded silk straight-leg pants are constructed from a luxurious, smooth fabric for a refined look and feel. They're cut to sit straight through the leg for a slimming effect and are designed with an elastic waistband for all-day comfort. Finished with decorative gold buckles and J.R. ornament, these pants can be dressed up or down depending on your mood and the occasion.



233951
COAT



233024
PANT



233130
DRESS



233026
TOP



233275
SKIRT



233157
JACKET



233248
PANT



233132
TOP



233132
TOP



233097
JUMPSUIT



233192
JACKET



233087
DRESS



233268
TOP



233056
TUNIC



233900
COAT



233143
PANT



233036
DRESS



233218
JACKET



233004
DRESS



233060
BLAZER



233068
PANT



233016
TOP



233211
DRESS



233977
CAMISOLE
SHADOW SLEEVES™



233120
DRESS



233117
TUNIC



233191
PANT



233274
DRESS



233169
JACKET



233233
PANT



233228
TOP



233213
DRESS



233295
DRESS



233280
TOP



233939
COVER UP



233939
COVER UP



233968
JACKET



161066TT
TUNIC



233954
TOP



233961
COAT



JET SET

Feeling the chill? Get under wraps with Jet Set's layering lineup. Puffer coats and vests with faux-fur trims bring rich texture and warmth to the wardrobe while beautifully embellished blazers shoot for the stars and add sparkling joy to the everyday. Additionally, find cut-out denim, dazzling tops, and our new take on the fan-favorite two-piece knit set.





233002
233933

233002 This luxurious tunic is crafted from a silky knit fabric, with mesh puff sleeves for a touch of drama. The asymmetrical design is flattering and feminine, while the beading detail adds a touch of glamour.
233933 The right pair of denim has the power to elevate your wardrobe. Made from luxurious woven denim material, these slim-fit jeans serve as an essential wardrobe pillar. Pair them with your favourite tunic or brazer for a cut-together yet casual look.

233972 This blazer features dramatic angles that show off your beautiful attributes. Made from soft woven fabric, this piece has a solid pattern and a notched collar. It owes its substantial feel to its interior lining. With long sleeves and a classic straight silhouette, this blazer is packed with eco-entire gorgeous simplicity. 233929 Throw on this understated pair of denim pants and enjoy a well-crossed night with little effort. Vase from our high-end blend of classic well-sourced denim material, these pants come with a classic and flattering slim fit that never goes out of style.

233972
233929





233923 Add glamour and shine to the gloomy winter season with this gorgeous puffer coat. Brilliantly combining form and function, this jacket is made from high-end, durable woven material with faux fur accents. It comes with a hooded collar and long straight sleeves. This anything-but-boring lined coat is ready to keep you warm throughout the cold months. **233248** Flare pants are all the rage, and these Ponte de Roma pants are the perfect way to rock the look at the office or on a night out. With a covered elastic waistband, fake welt pockets, and a chain ornament on the front, these pants are chic and stylish. The back dart ensures a perfect fit, while the flare out gives you a retro attitude that is both refined and fun. **233925** This coat is sure to turn heads with its form-flattering silhouette and well-curated blend of fabrics. Winter days are made more bearable with this jacket's warm inner lining. The faux fur finishes on the piece add an extra touch of elegance, while the hooded collar and long straight sleeves provide ultimate comfort. **233195** With a subtle hounds tooth print, these slim-fit pants are the perfect way to add an incognito pattern to your wardrobe. They are made from a heavy-knit material, giving them a substantial, luxurious feel. These pants also feature a black waistband. The best part? They're entirely reversible, which adds to their versatility.



233967
233907
233233

233967 Don't let the cold weather get you down. Embrace it in style with this stunning metallic puffer jacket. The deluxe woven fabric will keep you warm without sacrificing style. The fitted silhouette is both flattering and functional. And the mock collar and long straight sleeves add an extra touch of luxury. **233907** Your new go-to for elegance and comfort. This luxurious sweater knit top features a funnel collar, three-quarter bell sleeves, and a boxy silhouette. It's the perfect piece to elevate your everyday look. **233233** These bonded slim-fit pants are the epitome of comfort and style. The bonded silky knit fabric is super soft and feels great against your skin, while the slim fit flatters your figure. The structured contour waistband provides a comfortable, secure fit, and the JR tab ornament adds a touch of sophistication.



233935
233936

233935 This modern color-block top is crafted from a blend of knitwear and jacquard fabrics, providing a polished look that doesn't compromise on comfort. A funnel collar adds to its stately appearance, while three-quarter bell sleeves and a straight silhouette complete the look. **233936** Add some flair to your wardrobe with these culotte pants. Made from a soft-as-can-be knit material, they feature a color-block pattern that is instinctively complementary. A culotte cut provides a level of sophistication rarely seen in casual pants, making them perfect for dressing up or down. And the best part? They come with a matching top so that you can create a luxurious look with ease.



233302
JUMPSUIT



233002
TUNIC



233933
PANT



233972
BLAZER



233190
TUNIC



233082
TOP



233962
JACKET



233923
COAT



233001
PANT



233207
TOP



233079
TUNIC



233158
DRESS



233967
COAT



233257
TUNIC



233208
JACKET



233947
PANT





233975
COVER UP



233284
PANT



233172
DRESS



233133
TOP



233225
TOP



233285
PANT



233909
JACKET



233029
BLOUSE



233077
TUNIC



233919
PANT



233189
TUNIC



233095
JACKET



233925
COAT



233195
PANT



233935
TOP



233936
PANT



233062
COAT



233958
COAT



233907
TOP



233908
PANT



233238
JACKET



233083
TOP



233071
PANT



233301
TUNIC



233905
TOP



233906
PANT



233167
COAT





Joseph Ribkoff

GLOBAL HEAD OFFICE

2375 rue de l'Aviation, Montréal, Québec, Canada, H9P 2X6 | **JOSEPHRIBKOFF.COM**

CANADA & USA - 1 800 361 1839

AUSTRALIA - 03 9419 4999

BELGIUM AND LUXEMBURG - 32 927 98966

CROATIA, CZECH REPUBLIC, SLOVAKIA, SLOVENIA, POLAND AND HUNGARY - 44 7584 493979

FRANCE - 33 179255663

GERMANY, AUSTRIA, AND SWITZERLAND - 49 02102 939020

IRELAND - 353 1429 5353

ITALY - 39 0543 725862

MEXICO, COLOMBIA, AND CHILE - 52 442 161 0171

NETHERLANDS - 31 20 4080205

NEW ZEALAND - 09 623 0888

NORWAY, SWEDEN, DENMARK, AND FINLAND - 46 766 777 407

SPAIN, PORTUGAL, AND CANARY ISLANDS - 931 315 316

THE UNITED KINGDOM - 01392 876390